

CATHARINE CLARK GALLERY

49 Geary Street, Second Floor, San Francisco, CA 94108 | morphos@cclarkgallery.com | www.cclarkgallery.com | ph:[415] 399-1439

Masami Teraoka *Venus and Pope*

1 February – 31 March 2007



The Cloisters/Venus and Pope's Bullfight, 2006-07

\$ 325,000

Oil on canvas

101" x 300 ½" framed



The Cloisters Tsunami, 2002-2005

\$ 150,000

Oil on canvas in gold leaf frame

96 ½" x 100 ½" framed



The Cloisters/IVF Ring, 2006-07

\$ 70,000

Oil on panel

45 ¾" x 50 ½" x 2 ½" open

45 ¾" x 25 ¼" x 4 ½" closed



Post 9-11/Twin Towers, 2004

\$ 35,000

Acrylic on paper

9 ¾" x 41" unframed

19 ¼" x 50 ¼" framed



The Cloisters/Birth of Venus, 2002-06
Oil on canvas in gold leaf frame
96 ½" x 100 ½" framed

\$ 150,000



Venus and Pope's Workout, 2004-06
Oil on panel in gold-leaf frame
119 ⅛" x 123 ½" x 2 ¾" open
119 ⅛" x 61 ¾" x 5 ½" closed

\$ 175,000



The Cloisters/Holy Sea Pregnancy Test, 2006
Oil on panel in gold-leaf frame
126 ⅛" x 130 ½" x 2 ¾" open
126 ⅛" x 65 ¼" x 5 ½" closed

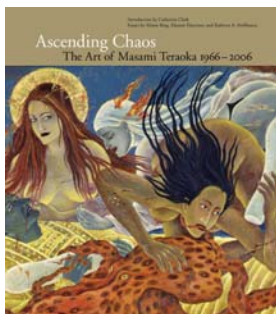
\$ 175,000

Also Available



Broadside:
Masami Teraoka: Venus and Pope
1 February – 31 March 2007; image of *The Cloisters/Venus and Pope's Bullfight, 2006-07*; 10 ¾" x 35".

\$100



Book:
Ascending Chaos: The Art of Masami Teraoka 1966-2006
Introduction by Catharine Clark. Essays by Alison Bing, Eleanor Heartney, and Kathryn A. Hoffmann.
Catalog of graphic work, 1972–2006, artist résumé, three 8-page gatefolds, and approximately 200 color images.
9 ½ x 11 inches; 248 pp; hardcover

\$ 60



Virtual Inferno/Cardinal Lesson, 2000
Oil on paper with gold-leaf frame
7" x 5" unframed
8 ¾" x 6 ¾" framed

\$ 3,500



Virtual Inferno/Confession, 2000
Oil on paper with gold-leaf frame
3 ¼" x 2 ¾" unframed
4 ¼" x 3 ½" framed

\$ 1,700



Virtual Inquisition/Face to Face, 2001
Oil on paper with gold-leaf frame
7" x 5" unframed
8 ¾" X 6 ¾" framed

\$ 3,500



Semana Santa/Octopus Trial, 2001
Oil on canvas with gold-leaf frame
16 ¼" x 13" framed

\$ 7,500



Virtual Inferno/Adoration, 2001
Oil on canvas with gold-leaf frame
4 ¼" x 3 ¼" unframed
5 ¼" x 4 ¼" framed

\$ 2,200



Semana Santa/Podium Riding, 2000
Oil on canvas with gold-leaf frame
16" x 13"

\$ 7,500



Virtual Inferno/Strong Bonds, 2001
Oil on paper with gold-leaf frame
7" x 5" unframed
8 ¾" x 6 ¾" framed

\$ 3,500



Semana Santa/Double Inquisition, 2000
Oil on paper with gold-leaf frame
8" x 6" unframed
9 ½" x 7 ½" framed

\$ 4,000



Sarah and Octopus/Seventh Heaven, 2001
29 Color woodblock print on Hosho paper
10 1/2" x 15 3/4" image and paper
18 1/2" x 22 1/2" framed

\$ 3,750



Semana Santa/Cloisters Workout, 2004
Oil on wood panels with 24-karat gold-leaf frame
38 3/8" x 44 1/2" x 2" open
38 3/8" x 22 1/2" x 4" closed

\$ 65,000



Semana Santa/Venus' Serpentine Confession, 2003
Oil on wood panels with 24-karat gold-leaf frame
38" x 44 1/2" x 1 1/2" open
38" x 22 1/2" x 3" closed

\$ 65,000



AIDS Series/Punk Geisha in Bath, c.1987
Watercolor and graphite on BFK Rives paper
22 1/4" x 15" unframed
28" x 20" framed

\$ 14,000



31 Flavors Invading Japan/French Vanilla, 1979
Sixty-five-color screenprint on Roll Rives paper
Edition of 58 + 21 proofs; P.P. VII
13 1/2" x 57 1/2" framed

\$ 15,000



Study for AIDS Series/Oiran and Kite #1, 1988
Watercolor on BFK Rives paper
22 1/4" x 15" unframed
30 1/2" x 23" framed

\$ 12,000



London Tube Series/Camden Eve, 1993
Watercolor on paper, mounted as a scroll
87 1/2" x 42" sheet
119 1/2" X 56 3/4" scroll

\$ 95,000



New Wave Series/What Are You Looking At?, 1992
Watercolor on paper
15" x 22 1/2" unframed
22" x 29" framed

\$ 30,000



Brave New World Traveler / Fear of Flying, 1991
Watercolor on paper
15" x 11" unframed
22 7/8" x 18 1/2" framed

\$ 9,000

CATHARINE CLARK GALLERY

49 Geary Street, Second Floor, San Francisco, CA 94108 | morphos@cclarkgallery.com | www.cclarkgallery.com | ph:[415] 399-1439

Video Room Claudia Hart

1 February – 31 March 2007



Machina, 2006
Single-channel video
Edition of 5 + 1 AP
Continuous loop

\$3,500